

SPB INDUSTRIAL CO.,LIMITED

Web: <http://www.spboiles.com>

Email: zhou@spboiles.com

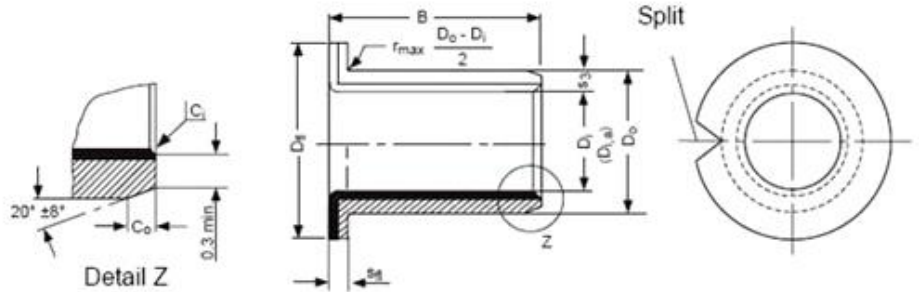
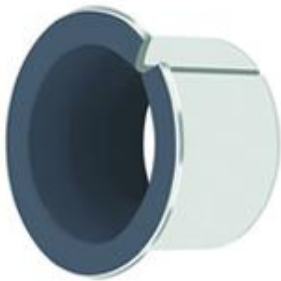
PE-F(BB DU) Flanged Bushing Catalog

- STRUCTURE

Metal-Polymer Composite Bushing Material

- CHARACTERISTICS

1. DU self-lubricating bushings offer very good wear and low friction performance over a wide range of loads, speeds and temperatures in dry running conditions
2. Suitable for lubricated applications
3. Suitable for linear, oscillating and rotating movements



Metric Sizes:

Part No.	Di (mm)	Do (mm)	Sfl (mm)	Dfl (mm)	B (mm)	Housing	Shaft	Di,a max in H7 (mm)	Di,a min in H7 (mm)	Clearance max. (mm)	Clearance min. (mm)
BB0304DU	3	4.5	0.75	7	4	H6	h6	3.048	3	0.054	0
BB0404DU	4	5.5	0.75	9	4	H6	h6	4.048	4	0.056	0
BB0505DU	5	7	0.925	10	5	H7	f7	5.055	4.99	0.077	0
BB0604DU	6	8	0.925	12	4	H7	f7	6.055	5.99	0.077	0
BB0608DU	6	8	0.925	12	8	H7	f7	6.055	5.99	0.077	0
BB0806DU	8	10	0.925	15	5.5	H7	f7	8.055	7.99	0.083	0.003
BB0808DU	8	10	0.925	15	7.5	H7	f7	8.055	7.99	0.083	0.003
BB0810DU	8	10	0.925	15	9.5	H7	f7	8.055	7.99	0.083	0.003
BB1007DU	10	12	0.925	18	7	H7	f7	10.058	9.99	0.086	0.003
BB1009DU	10	12	0.925	18	9	H7	f7	10.058	9.99	0.086	0.003
BB1012DU	10	12	0.925	18	12	H7	f7	10.058	9.99	0.086	0.003
BB1017DU	10	12	0.925	18	17	H7	f7	10.058	9.99	0.086	0.003
BB1207DU	12	14	0.925	20	7	H7	f7	12.058	11.99	0.092	0.006
BB1209DU	12	14	0.925	20	9	H7	f7	12.058	11.99	0.092	0.006
BB1212DU	12	14	0.925	20	12	H7	f7	12.058	11.99	0.092	0.006

SPB INDUSTRIAL CO.,LIMITED

Web: <http://www.spboiles.com>

Email: zhou@spboiles.com

BB1217DU	12	14	0.925	20	17	H7	f7	12.058	11.99	0.092	0.006
BB1412DU	14	16	0.925	22	12	H7	f7	14.058	13.99	0.092	0.006
BB1417DU	14	16	0.925	22	17	H7	f7	14.058	13.99	0.092	0.006
BB1509DU	15	17	0.925	23	9	H7	f7	15.058	14.99	0.092	0.006
BB1512DU	15	17	0.925	23	12	H7	f7	15.058	14.99	0.092	0.006
BB1517DU	15	17	0.925	23	17	H7	f7	15.058	14.99	0.092	0.006
BB1612DU	16	18	0.925	24	12	H7	f7	16.058	15.99	0.092	0.006
BB1617DU	16	18	0.925	24	17	H7	f7	16.058	15.99	0.092	0.006
BB1812DU	18	20	0.925	26	12	H7	f7	18.061	17.99	0.095	0.006
BB1817DU	18	20	0.925	26	17	H7	f7	18.061	17.99	0.095	0.006
BB1822DU	18	20	0.925	26	22	H7	f7	18.061	17.99	0.095	0.006
BB2012DU	20	23	1.45	30	11.5	H7	f7	20.071	19.99	0.112	0.01
BB2017DU	20	23	1.45	30	16.5	H7	f7	20.071	19.99	0.112	0.01
BB2022DU	20	23	1.45	30	21.5	H7	f7	20.071	19.99	0.112	0.01
BB2512DU	25	28	1.45	35	11.5	H7	f7	25.071	24.99	0.112	0.01
BB2517DU	25	28	1.45	35	16.5	H7	f7	25.071	24.99	0.112	0.01
BB2522DU	25	28	1.45	35	21.5	H7	f7	25.071	24.99	0.112	0.01
BB3016DU	30	34	1.95	42	16	H7	f7	30.085	29.99	0.126	0.01
BB3026DU	30	34	1.95	42	26	H7	f7	30.085	29.99	0.126	0.01
BB3516DU	35	39	1.95	47	16	H7	f7	35.085	34.99	0.135	0.015
BB3526DU	35	39	1.95	47	26	H7	f7	35.085	34.99	0.135	0.015
BB4016DU	40	44	1.95	53	16	H7	f7	40.085	39.99	0.135	0.015
BB4026DU	40	44	1.95	53	26	H7	f7	40.085	39.99	0.135	0.015
BB4516DU	45	50	2.45	58	16	H7	f7	45.105	44.99	0.155	0.015
BB4526DU	45	50	2.45	58	26	H7	f7	45.105	44.99	0.155	0.015

SPB INDUSTRIAL CO.,LIMITED

Web: <http://www.spboiles.com>

Email: zhou@spboiles.com

Inch Size:

Part No.	Di [inch]	Do [inch]	Sfl (inch)	Sfl max. (inch)	Sfl min. (inch)	Dfl (inch)	Dfl max. (inch)	Dfl min. (inch)	B (inch)	DJ max. (inch)	DJ min. (inch)	DH max. (inch)	DH min. (inch)	Di,a max (inch)	Di,a min (inch)
06FDU04	3/8	15/32	0.043	0.047	0.039	0.6875	0.7075	0.6675	0.245	0.375	0.374	0.4691	0.4684	0.3779	0.3752
06FDU06	3/8	15/32	0.043	0.047	0.039	0.6875	0.7075	0.6675	0.37	0.375	0.374	0.4691	0.4684	0.3779	0.3752
06FDU08	3/8	15/32	0.043	0.047	0.039	0.6875	0.7075	0.6675	0.495	0.375	0.374	0.4691	0.4684	0.3779	0.3752
06FDU12	3/8	15/32	0.043	0.047	0.039	0.6875	0.7075	0.6675	0.745	0.375	0.374	0.4691	0.4684	0.3779	0.3752
08FDU04	1/2	19/32	0.043	0.047	0.039	0.8125	0.8325	0.7925	0.245	0.5	0.499	0.4691	0.5934	0.5029	0.5002
08FDU06	1/2	19/32	0.043	0.047	0.039	0.8125	0.8325	0.7925	0.37	0.5	0.499	0.4691	0.5934	0.5029	0.5002
08FDU08	1/2	19/32	0.043	0.047	0.039	0.8125	0.8325	0.7925	0.495	0.5	0.499	0.4691	0.5934	0.5029	0.5002
08FDU12	1/2	19/32	0.043	0.047	0.039	0.8125	0.8325	0.7925	0.745	0.5	0.499	0.4691	0.5934	0.5029	0.5002
10FDU06	5/8	23/32	0.043	0.047	0.039	0.93725	0.9575	0.917	0.37	0.625	0.624	0.7192	0.7184	0.628	0.6252
10FDU08	5/8	23/32	0.043	0.047	0.039	0.93725	0.9575	0.917	0.495	0.625	0.624	0.7192	0.7184	0.628	0.6252
10FDU10	5/8	23/32	0.043	0.047	0.039	0.93725	0.9575	0.917	0.62	0.625	0.624	0.7192	0.7184	0.628	0.6252
10FDU12	5/8	23/32	0.043	0.047	0.039	0.93725	0.9575	0.917	0.745	0.625	0.624	0.7192	0.7184	0.628	0.6252
12FDU06	3/4	7/8	0.059	0.063	0.055	1.25	1.27	1.23	0.37	0.75	0.7488	0.8755	0.8747	0.7534	0.7502
12FDU08	3/4	7/8	0.059	0.063	0.055	1.25	1.27	1.23	0.495	0.75	0.7488	0.8755	0.8747	0.7534	0.7502
12FDU12	3/4	7/8	0.059	0.063	0.055	1.25	1.27	1.23	0.745	0.75	0.7488	0.8755	0.8747	0.7534	0.7502
12FDU16	3/4	7/8	0.059	0.063	0.055	1.25	1.27	1.23	0.995	0.75	0.7488	0.8755	0.8747	0.7534	0.7502
14FDU08	7/8	1	0.059	0.063	0.055	1.25	1.27	1.23	0.495	0.875	0.8738	1.0005	0.9997	0.8784	0.8752
14FDU12	7/8	1	0.059	0.063	0.055	1.25	1.27	1.23	0.745	0.875	0.8738	1.0005	0.9997	0.8784	0.8752
14FDU16	7/8	1	0.059	0.063	0.055	1.25	1.27	1.23	0.995	0.875	0.8738	1.0005	0.9997	0.8784	0.8752
14FDU20	7/8	1	0.059	0.063	0.055	1.25	1.27	1.23	1.245	0.875	0.8738	1.0005	0.9997	0.8784	0.8752
16FDU08	1	1 1/8	0.059	0.063	0.055	1.375	1.395	1.355	0.495	1.0005	0.9988	1.1255	1.1247	1.0034	1.0002
16FDU12	1	1 1/8	0.059	0.063	0.055	1.375	1.395	1.355	0.745	1.0005	0.9988	1.1255	1.1247	1.0034	1.0002
16FDU16	1	1 1/8	0.059	0.063	0.055	1.375	1.395	1.355	0.995	1.0005	0.9988	1.1255	1.1247	1.0034	1.0002
16FDU20	1	1 1/8	0.059	0.063	0.055	1.375	1.395	1.355	1.245	1.0005	0.9988	1.1255	1.1247	1.0034	1.0002
20FDU16	1 1/4	1 13/32	0.074	0.078	0.07	1.75	1.78	1.72	0.995	1.25	1.2484	1.4068	1.4058	1.254	1.2502
20FDU20	1 1/4	1 13/32	0.074	0.078	0.07	1.75	1.78	1.72	1.245	1.25	1.2484	1.4068	1.4058	1.254	1.2502
20FDU24	1 1/4	1 13/32	0.074	0.078	0.07	1.75	1.78	1.72	1.495	1.25	1.2484	1.4068	1.4058	1.254	1.2502
24FDU16	1 1/2	1 21/32	0.074	0.078	0.07	2	2.03	1.97	0.995	1.5	1.4984	1.6568	1.6558	1.504	1.5002
24FDU24	1 1/2	1 21/32	0.074	0.078	0.07	2	2.03	1.97	1.495	1.5	1.4984	1.6568	1.6558	1.504	1.5002
24FDU32	1 1/2	1 21/32	0.074	0.078	0.07	2	2.03	1.97	1.995	1.5	1.4984	1.6568	1.6558	1.504	1.5002

SPB INDUSTRIAL CO.,LIMITED

Web: <http://www.spboiles.com>

Email: zhou@spboiles.com

28FDU16	1 3/4	1 15/16	0.09	0.094	0.086	2.375	2.405	2.345	0.995	1.75	1.7484	1.9381	1.9371	1.7548	1.7502
28FDU24	1 3/4	1 15/16	0.09	0.094	0.086	2.375	2.405	2.345	1.495	1.75	1.7484	1.9381	1.9371	1.7548	1.7502
28FDU32	1 3/4	1 15/16	0.09	0.094	0.086	2.375	2.405	2.345	1.995	1.75	1.7484	1.9381	1.9371	1.7548	1.7502